

## **ABERFELDY, DULL & WEEM LOCAL PLACE PLAN**

**Prepared by Aberfeldy Development Trust in partnership with  
Aberfeldy Community Council and Dull & Weem Community Council**

**June 2025**



## **CONTENTS**

<b>WORKING TOGETHER</b>	<b>3</b>
<b>LOCAL PEOPLE HAVE THEIR SAY</b>	<b>3</b>
<b>DEVELOPING THE LOCAL PLACE PLAN</b>	<b>3</b>
<b>NATIONAL AND LOCAL POLICY CONSIDERATIONS</b>	<b>5</b>
<b>PKC SIGNIFICANT PLANNING APPLICATIONS</b>	<b>7</b>
<b>OUR COMMUNITY NOW</b>	<b>8</b>
<b>LOCAL PLACE PLAN MAPS</b>	<b>13</b>
<b>PLACES OF LOCAL SIGNIFICANCE</b>	<b>13</b>
<b>OUTDOOR RECREATION, ACCESS AND GREENSPACE</b>	<b>13</b>
<b>HERITAGE/ TOURISM</b>	<b>15</b>
<b>COMMUNITY, CARE &amp; CULTURE</b>	<b>17</b>
<b>LOCAL ECONOMY &amp; AMENITIES</b>	<b>18</b>
<b>ABERFELDY, DULL &amp; WEEM – VISION FOR OUR FUTURE</b>	<b>20</b>
<b>STATEMENT OF PROPOSALS</b>	<b>21</b>
<b>ACKNOWLEDGEMENTS</b>	<b>24</b>
<b>APPENDIX 1</b>	<b>25</b>
<b>APPENDIX 2</b>	<b>26</b>
<b>APPENDIX 3</b>	<b>27</b>

## **WORKING TOGETHER**

The preparation of this Local Place Plan has been led by the Aberfeldy Development Trust, a constituted, community-controlled body, using the findings from the Community Action Plan which has been supported by a Steering Group which brought together representatives of Aberfeldy Development Trust, Aberfeldy and Dull & Weem Community Councils, and other community organisations.

## **LOCAL PEOPLE HAVE THEIR SAY**

The Community Action Plan was informed by extensive community engagement carried out between May and October 2024. The process involved:

- **Community Views Survey** delivered to all households, and available online
- **Stakeholder interviews and meetings** with community organisations, service providers, local businesses and public agencies
- a **Business Survey**
- compiling a **Profile of facts and figures**
- holding a **Community Futures Event** and other feedback opportunities

**557 COMMUNITY VIEWS SURVEY FORMS WERE RETURNED FROM 1,200 HOUSES**

**25 STAKEHOLDER MEETINGS WERE HELD**

**26 BUSINESSES TOOK PART IN THE BUSINESS SURVEY**

**282 PEOPLE ATTENDED THE COMMUNITY FUTURES EVENT**

## **DEVELOPING THE LOCAL PLACE PLAN**

This Local Place Plan has been informed by the community input to the Community Action Plan between May – October 2024. Documents can be found on <https://aberfeldydt.org/>

Assistance was provided by the James Hutton Institute to carry out additional community consultation specific to the Local Place Plan, including engagement on spatial issues at the Community Futures Event on 26 October 2024, and a Workshop session with the Steering Group on 13 January 2025.

This was followed by a Consultation period from 26 June to 23 July 2025. The LPP was available online and a copy held in the Library at Breadalbane Community Campus. Residents were notified of the consultation period by social media and an article in the July edition of the Athol and Breadalbane Quair magazine.

Perth & Kinross Highland Ward Councillors – John Duff, Xander McDade & Mike Williamson – were provided, via email, a copy of the LPP for consideration during the consultation period.

All neighbouring Community Councils were also provided with a copy of the LPP via email. The CCs were Mid-Atholl, Strathtay & Grandtully; Kenmore & District;

Killiecrankie, Fincastle & Tummell; Rannoch; Glen Lyon & Loch Tay; Pitlochry & Moulin; Dunkeld & Birnam.

A copy of the emails and notification can be found in Appendices 1- 3.



**NATIONAL AND LOCAL POLICY CONSIDERATIONS**

Strategy / Plan	Priorities / Outcomes	Consideration in our LPP
<b>National Planning Framework 4</b> (2023 – 2045) – <i>6 National Outcomes (p95)</i>	<ol style="list-style-type: none"> <li>1. Meeting the housing needs of people living in Scotland including the housing needs for older people and disabled people,</li> <li>2. Improving the health and wellbeing of people living in Scotland,</li> <li>3. Increasing the population of rural areas of Scotland,</li> <li>4. Improving equality and eliminating discrimination,</li> <li>5. Meeting any targets relating to the reduction of emissions of greenhouse gases, and</li> <li>6. Securing positive effects for biodiversity.</li> </ol>	<ol style="list-style-type: none"> <li>1. Increasing the availability of affordable, quality housing is a key priority in our LPP as outlined in our Vision, and identified in the actions in our CAP. The aim is to meet housing needs for all, including young, older, and those with additional needs.</li> <li>2. Our list of Local Places of significance highlight the value we place on natural and cultural heritage assets, key local amenities and facilities that are essential for wellbeing. Our Vision seeks to make our community a safer, healthier place to live.</li> <li>3. By increasing the availability of affordable, quality housing we aim to make the area accessible for those wishing to remain or move into this rural area.</li> <li>4. Throughout the LPP and CAP process we have maintained equality as a fundamental aspect of our visions and proposals. We want our area to be a great place to live for all, and aim to address inequalities such as access to suitable housing or amenities through the actions proposed in our LPP and CAP.</li> <li>5. The natural environment is a defining part of our area's character, and we want any future developments in our area to benefit both people and nature. Our LPP identifies improvements to enable active travel, and reduce flood risks. Our CAP identifies a strategy to become a measurably greener community.</li> <li>6. Our LPP identifies environmental assets including the River Tay, surrounding forestry and countryside access, iconic views, and wildlife, that should be recognised and preserved in any future development proposals.</li> </ol>

Strategy / Plan	Priorities / Outcomes	Consideration in our LPP
<b>PKC Adopted LDP2 (2019)</b> – <i>Policy Areas in alignment with Scottish Planning Policy (p8)</i>	<ul style="list-style-type: none"> <li>• A successful, sustainable place</li> <li>• A low-carbon place</li> <li>• A natural, resilient place</li> <li>• A connected place</li> </ul>	Our LPP outlines visions and proposals that seek to enable developments in and for our community that amplify sustainability of our local economy, population, cultural and natural heritage while improving accessibility and resilience of our facilities, amenities and public spaces.
<b>PK Local Outcomes Improvement Plan (2022-2032)</b> – <i>Strategic Priorities (p5-6)</i>	<ol style="list-style-type: none"> <li>1. Reducing poverty</li> <li>2. Physical and mental wellbeing</li> <li>3. Digital participation</li> <li>4. Learning and development</li> <li>5. Employability</li> </ol> <p>Additional crosscutting issues:</p> <ul style="list-style-type: none"> <li>• climate change</li> <li>• cost of living crisis</li> </ul>	Our LPP recognises the interconnected nature of spatial development and local outcomes. For our area we have highlighted affordable and quality housing, accessible infrastructure and amenities, regulated and appropriate provision for tourism/visitors, and accessible cared for greenspace as important focal points for developments in our community.
<b>Highland &amp; Strathay Local Action Plan (n.d.)</b> – <i>Key Inequalities (p3-4)</i>	<ul style="list-style-type: none"> <li>• Child poverty</li> <li>• Employment and Income</li> <li>• Health and Wellbeing</li> <li>• Housing</li> <li>• Fuel Poverty</li> <li>• Broadband</li> <li>• Access</li> </ul>	Our LPP Vision and the CAP actions address these key inequalities as identified and relevant to residents in Aberfeldy, Dull & Weem.  In delivering our CAP vision and priorities, we aim to work in partnership with PKC and other CPP organisations, neighbouring communities in Highland & Strathay.

**PKC SIGNIFICANT PLANNING APPLICATIONS**

We note below the approved and pending planning applications that will be significant for the communities of Aberfeldy, Dull & Weem.

<b>APPROVED</b>	<b>LDP2/ Planning Application</b>	<b>Consideration</b>
Aberfeldy	08/01518/FUL	Phase 3 Land At Duntaylor Avenue Aberfeldy Erection of 27 dwellinghouses
Aberfeldy	24/00279/FLL	Dunolly, Taybridge Drive Aberfeldy PH15 2BP Change of use and alterations to residential outdoor centre to form 8 serviced apartments (optional short-term let apartments)
Aberfeldy	H36 – LDP2	Borlick - 15.4 ha site in LDP 2 – housing proposal 160-250 (maximum of 200 to 2029) Masterplan to be submitted at the time of any planning application, including the provision of 1ha of serviced employment land on site E10 by the completion of the 75th dwelling
Aberfeldy	E10 – LDP2	Borlick - 5.0 ha site in LDP 2 – General Employment Use
Aberfeldy	22/01836/FLL	Duntuim Residential Development, Aberfeldy PH15 2EU Erection of 39 dwellinghouses,
<b>Pending</b>		
Aberfeldy	24/01760/FLL	Former Cottage Hospital Old Crieff Road Aberfeldy PH15 2DH Change of use and alterations to hospital to form 3 dwellinghouses, erection of 4 dwellinghouses
Aberfeldy	25/00002/PAN	Moness House Hotel And Country Club Aberfeldy PH15 2DY Change of use of holiday cottages to allow holiday use or residential use as staff accommodation for employees of Taymouth Castle Estate
Aberfeldy	24/01854/FLL	Mill Brae Cottage Mill Street Aberfeldy PH15 2BT Erection of 3 dwellinghouses and associated works



## OUR COMMUNITY NOW

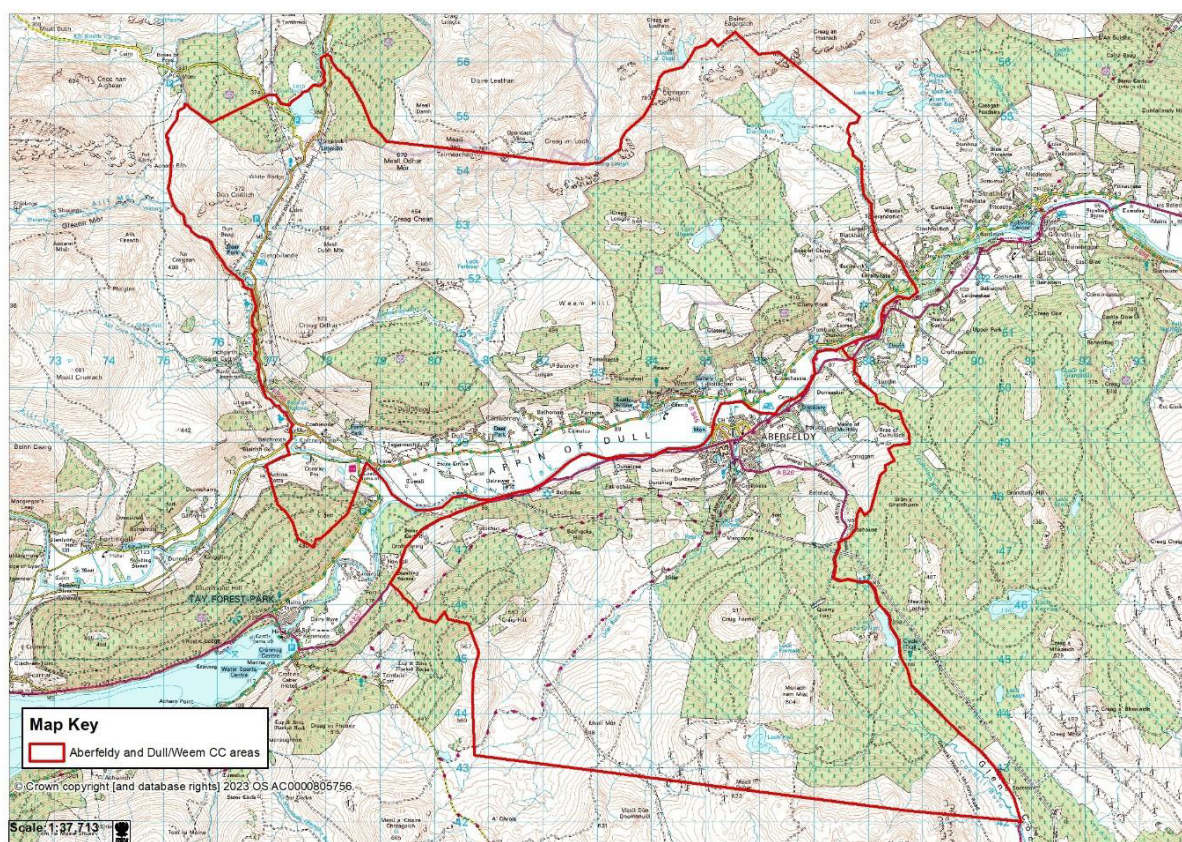
The full Community Profile prepared to inform the Community Action Plan can be found at <https://aberfeldydt.org/>

### Aberfeldy, Dull & Weem 2024 Summary Profile

#### Location and population

Aberfeldy is located in Strath Tay, on the upper reaches of the River Tay. Aberfeldy is the main town for residents of upper Loch Tay, Grandtully and Strathtay. Dull and Weem are smaller settlements on the opposite side of the River Tay.

The 2022 Census shows the population of Aberfeldy as 1,894, decreased from 1,986 in the 2011 Census. The percentage of younger people (0-44 years) in Aberfeldy decreased from 48.9% to 42.9% between 2011 – 2022.



Map showing Local Place Plan area (provided by Perth & Kinross Council)

#### Housing and Development

There are 922 occupied households in Aberfeldy and 133 in Dull & Weem (Census 2022). Around 10% of the housing stock in Aberfeldy, and around 24% in Dull & Weem, is either vacant property or second/holiday homes.

Aberfeldy Development Trust was launched in May 2022 with the primary objective of supporting the creation of affordable and sustainable housing for the people of Aberfeldy and surrounding districts.

## **Local Economy**

Aberfeldy has an industrial heritage that ranges from cotton milling dating back to 1799, and most famously whisky distilling. The present day Dewar's Aberfeldy Distillery was built in 1896, and is a popular visitor attraction as well as a major employer.

The largest industry of occupation is Accommodation and Food Services, employing over 18% of the workforce, compared to 8% in Perth & Kinross as a whole. Self-employment stands at 13.1%, compared to 9.7% (Perth & Kinross) and 7.4% (Scotland).

Scotland's first Fairtrade town, Aberfeldy features independently owned shops, cafes, restaurants and pubs, a large Co-op grocery store and one petrol station. Aberfeldy Caravan Park on the outskirts of town is open from March to October. Aberfeldy Farmers Market takes place on the first Sunday of each month.

Aberfeldy Business Park provides premises for around 18 independent businesses, while the Small Business Centre offers office accommodation. Aberfeldy Small Business Association works to support and promote the independent businesses of the area.

## **Childcare & Education**

Breadalbane Academy in Aberfeldy comprises nursery, primary and secondary education, and provides community access to the library, sports and meeting facilities. The catchment covers over 1000 square miles, and receives S5 pupils from Pitlochry High School. Around 200 pupils are registered at the primary school, and 450 at the secondary school.

Pre-school nursery provision at Breadalbane Academy takes children from the age of two. ABC (Above and Beyond Childcare) private nursery offers spaces for 26 children.

## **Health & Care**

Aberfeldy Health Centre provides primary care services, with a full team of GPs, nurses, and healthcare professionals. Pitlochry Community Hospital offers a range of appointment-only services during the day. Perth Royal Infirmary is nearest for out of hours treatment, minor injuries and emergency services.

Led by a group of local health professionals, Healthiest Town is a community project promoting community health and well-being.

For elderly care, Eskdale House, run by the Abbeyfield Breadalbane Society, has 8 rooms in a sheltered house. Dalweem Care Home, run by Perth & Kinross Council, has 16 rooms. There is also a Care and Treatment Centre at Dalweem.

## **Transport**

Rail services run from Pitlochry and Dunkeld, with regular direct services running north to Inverness and south to Perth and Glasgow.

A two-hourly bus to Perth operates on weekdays, and less frequently at weekends. The 91 bus does a twice daily circuit from Aberfeldy through Weem to Fortingall and Fearnan, several days a week.

Tay Valley Connections operates a community car service, supported by a pool of volunteer drivers.

### **Emergency services**

- No local police station. Nearest in Pitlochry.
- Retained Fire Service in Aberfeldy.
- Community First Responders provide initial emergency care.
- Multiple defibrillators throughout the town.
- Tayside Mountain Rescue Team has a base in Aberfeldy.

### **Community Organisations and Facilities**

This is a very active community, with a wide range of community organisations, facilities and activities.

#### Key community organisations:

- Aberfeldy Community Council
- Dull & Weem Community Council
- Aberfeldy Development Trust
- Tay Valley Connections

#### Community Facilities:

- Locus Centre & Aberfeldy Town Hall
- Aberfeldy Parish Church
- Camserney Hall
- Aberfeldy Scout Hut
- Birks Cinema
- Community Library, part of the Breadalbane Community Campus

#### Churches:

- Aberfeldy Parish Church & Weem Parish Church
- Our Lady of Mercy Catholic Church
- Jehovah's Witnesses
- Baha'i Faith

#### Sport & Recreation:

- Breadalbane Community Campus – sports facilities, gym & swimming pool
- Clubs and facilities covering – football, rugby, golf, tennis, cricket, bowling, canoeing and fishing
- Feldyloo Accessible trail and Parkrun
- Walking & cycling groups
- Aberfeldy Sports club building a mixed use clubhouse/ changing facility
- Community owned putting green
- Victoria Park with children's play area



## **Environment**

Aberfeldy sits on the River Tay, Scotland's longest river. The river is important for fishing, and also used for recreational canoeing and rafting.

The Birks of Aberfeldy is classified as a Site of Special Scientific Interest. It is a much visited gorge and scenic walk, and is partly looked after by volunteers.

The foothills of the Grampian mountains, with scenic peaks including Schiehallion, dominate the surrounding landscape to the north. Griffin Forest lies to the south, offering opportunities for walking and cycling.

The volunteer Upper Tay Paths Group, set up 20 years ago, created the Grandtully to Aberfeldy footpath along the railway line, and the Aberfeldy to Kenmore Riverside Path. Volunteers currently maintain around 60 miles of local paths.

The long distance Rob Roy Way passes through Aberfeldy, bringing both walkers and cyclists to the town.

## **Sustainability**

Sustainability initiatives include:

- Aberfeldy & Breadalbane Climate Cafes
- Repair Cafe
- Handam Refill Shop
- Warm Connections (home energy advice project)
- Upcycling projects and courses
- Litter picks organised by Tay Valley Connections

## **Heritage**

The Breadalbane Heritage Society holds regular talks and events, while Aberfeldy Museum Group is working towards a permanent museum in Aberfeldy. Key heritage assets include:

- Wade's Bridge
- Castle Menzies
- The Old Kirk at Weem

Friends of Wade's Bridge are working with Perth & Kinross Council to develop a conservation management plan for the bridge and involve the community in its restoration.

## **Culture**

The Birks community-owned cinema is a cultural hub, providing films, streaming of theatre, art, opera and ballet as well as a venue for community and youth/children's activities. The town has a growing live music scene and other cultural groups including Aberfeldy Drama Club, Gaelic Choir and the Community Choir.

### ***Note on Census statistics:***

Census statistics quoted are from Scotland's Census 2022

<https://www.scotlandscensus.gov.uk/>

Statistics for Aberfeldy are based on the Aberfeldy Census Locality. Statistics for Dull & Weem are based on the 2 Census Output areas (S00170853 and S00160851).

## LOCAL PLACE PLAN MAPS

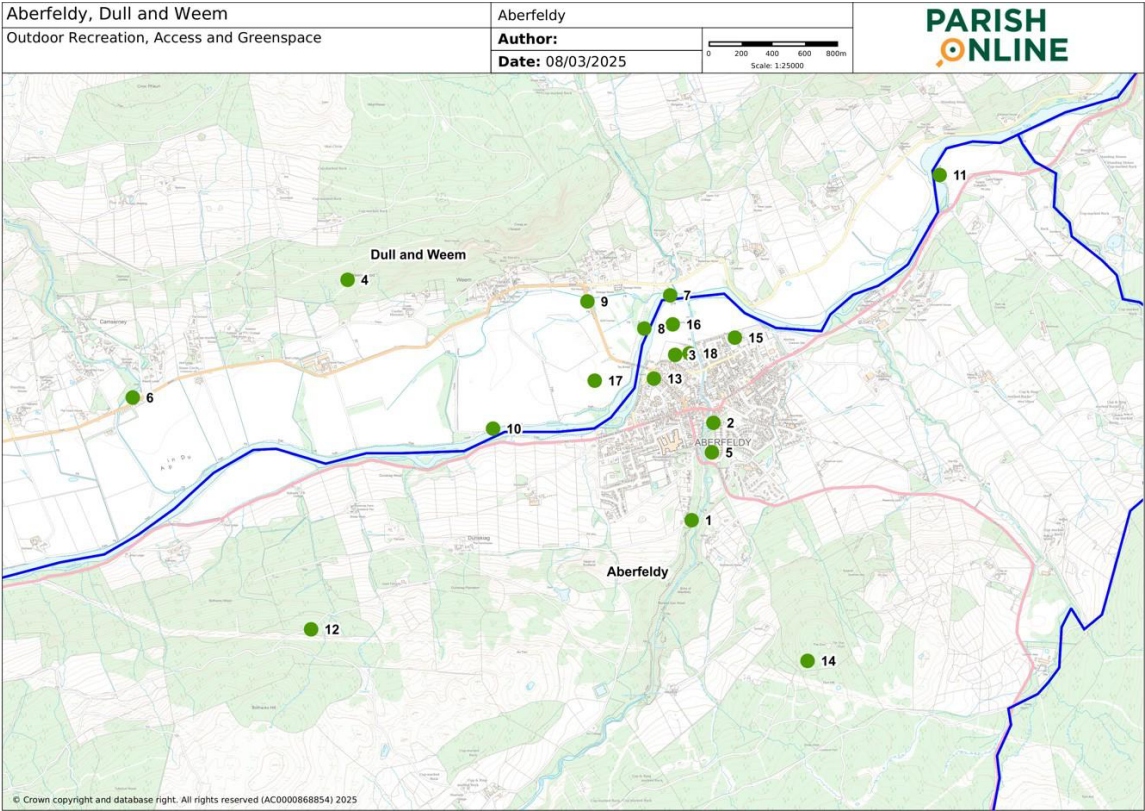
### PLACES OF LOCAL SIGNIFICANCE

These places, assets and buildings have been identified by the community as being of local significance and should be recognised in any ongoing and future developments that may impact on the land and place of Aberfeldy, Dull & Weem. Places in **bold** are included on the maps.

#### Outdoor Recreation, Access and Greenspace

Outdoor recreation/ greenspace	Specific locations
Parks, Woods and 'pocket parks'	<b>Birks Lower and Upper; Victoria Park; Weem Wood</b> (and Rock); <b>Wade's Park</b> ; Cluny Gardens; Strath Tay; Poplar Avenue Trees; <b>The Wee Birks field</b> ; North Meadow
Walks/ Paths:	<b>Aberfeldy to Weem walk; Feldy Roo Path</b> ; Griffin Forest paths; <b>Rob Roy Way; River Tay Way; Riverside path to Kenmore/Dull</b> ; Moness Burn; <b>Dun at Moness</b>
Bridges	<b>Plastic bridge</b> ; Wade's bridge; river footbridges
Views, environmental benefits of, (and access to)	Farragon Hill: to Ben Lawers; to Schiehallion; to Dùn Coillich
River access	Points of Access to River Tay; for fishing, kayaking, canoeing
Recreation areas and clubs	New Sports Pavillion; <b>Putting Green; Bowling Green; Tennis courts; Golf course</b> ; Football club; Cricket club; Rugby club; Bike trails and paths; Glassie Bike park;
Therapeutic and community greenspaces	Dementia Garden at the Fire Station; <b>Community Garden and Biodynamic gardens</b> at Camserney
Playparks	<b>Victoria</b> ; Duntaylor; Tayside Place; Moness Crescent



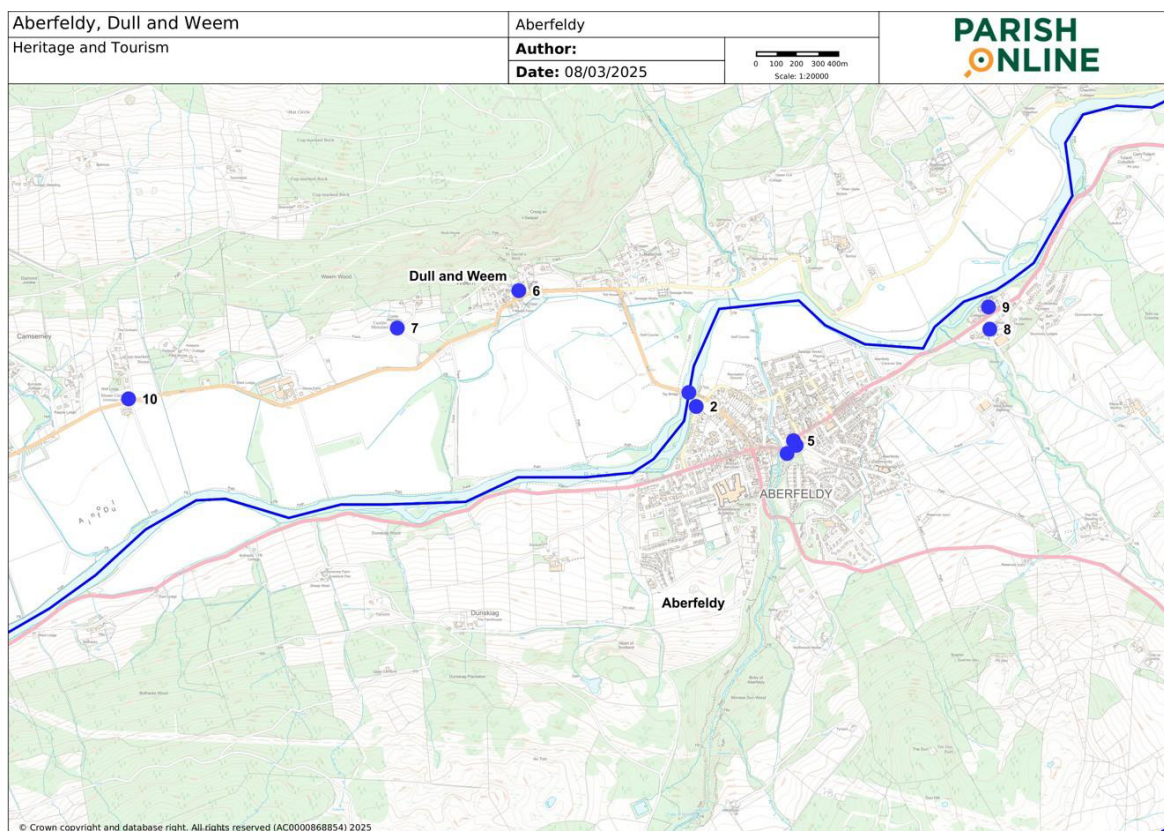


## Key to Outdoor Recreation, Access and Greenspace Map

Number	Name
1	Birks of Aberfeldy
2	Lower Birks
3	Victoria Park
4	Weem Wood
5	Wee Birks Field
6	Community Garden & Biodynamic Garden
7	Plastic Bridge
8	Feldy-Roo Path
9	Aberfeldy to Weem Path
10	Aberfeldy to Kenmore Path
11	River Tay Way to Grandtully
12	Rob Roy Way
13	Putting Green
14	Path to the Dun
15	Football Club Pitch
16	Golf Course
17	Wades Park & Showground
18	Tennis Club & Bowling Green

**Heritage/ Tourism**

Heritage places of significance	Specific locations
Churches and places of worship	Aberfeldy Parish Church; <b>Old Kirk Weem</b> ; Weem Parish Church; Aberfeldy Catholic Church; Dull Church; Jehovah's Witness Hall;
Memorials and statues	<b>War memorial</b> (Lower Birks); <b>Fountain</b> (McPherson fountain); <b>Black Watch monument</b> ; Rabbie Burns Statue at Birks
Carvings, ruins and stone circles	Wooden roof carvings; <b>The castle</b> and <b>stone circles</b> ; Weem Rock- St Davids Well and Rock carvings
Conservation area	<b>Aberfeldy Conservation Area</b>
Others	<b>Wades Bridge</b> ; <b>Castle Menzies</b> ; <b>Cemetery</b> ; <b>Distillery</b>



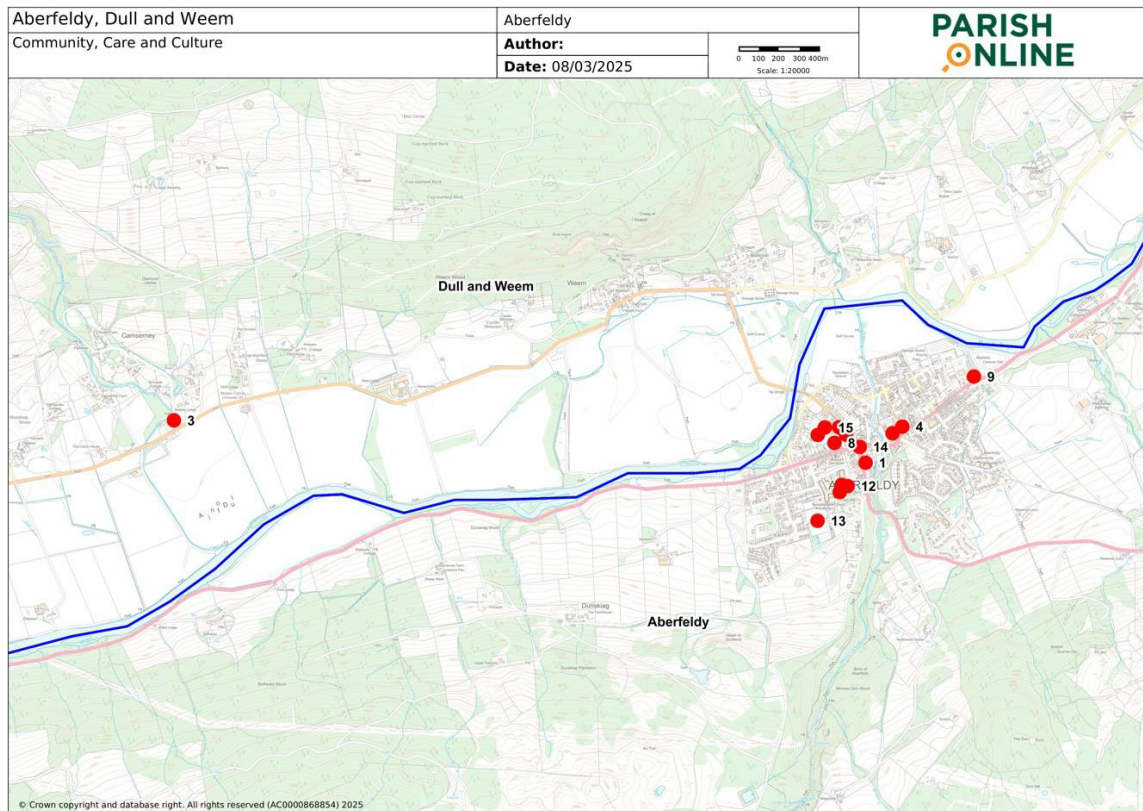
### Key to Heritage and Tourism Map

Number	Name
1	Wades Bridge
2	Black Watch Monument
3	Fountain
4	War Memorial
5	Conservation Area
6	Old Kirk Weem
7	Castle Menzies
8	Distillery
9	Cemetery
10	Stone Circle



## Community, care & culture

Community spaces/ facilities	Specific locations
Community centres and halls	<b>Aberfeldy Town Hall; Locus Centre; Camserney Village Hall</b>
Cultural spaces	<b>Birks Cinema</b>
Care facilities	<b>Eskdale Community Care; Dalweem Care Hub; Dalweem and Highland Perthshire Plus Space; Abbeyfield; Aberfeldy Medical Centre</b>
Education & childcare	<b>ABC nursery; Breadalbane Academy; Campus leisure centre; Library, Playing fields</b>
Youth facilities	<b>Breathe Lounge; Scout Hut</b>



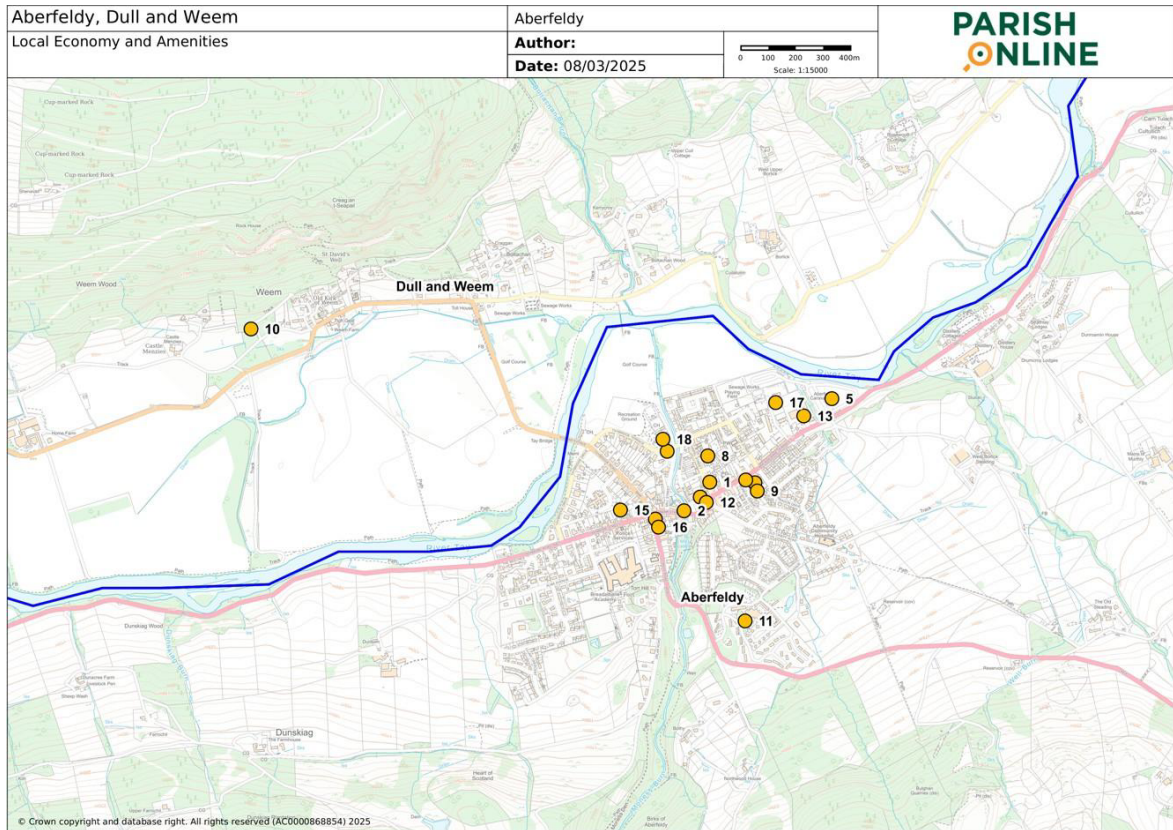
## Key to Community, Care and Culture Map

Number	Name
1	Aberfeldy Town Hall
2	Locus Centre
3	Camserney Village Hall
4	Birks Cinema
5	Eskdale Community Care
6	Dalweem Care Hub
7	Abbeyfield
8	Aberfeldy Medical Centre
9	ABC Nursery
10	Breadalbane Academy
11	Campus Leisure Centre and Pool
12	Library
13	Playing Fields
14	Breathe Lounge
15	Scout Hut

## Local economy &amp; amenities

Shops and amenities	Specific locations
Shops	Independent shops/cafes; <b>The thrift shop; Supermarket and fuel station</b> ; shop fronts
Visitor facilities	Hotels/pubs; Weem Hotel; <b>Caravan park; Moness Resort; Information centre at Locus Centre; Public toilet block at Victoria Park</b> ; noticeboards; <b>public car parks</b>
Town Square	<b>Event &amp; performance space</b> ; trees & floral enhancements; street furniture; disabled parking space
Business facilities	<b>Aberfeldy Business park; Small business centre.</b>
Amenities	<b>Health centre; Fire Station; Recycling centre</b> ; Chemist; Optician; Dentist; <b>Post Office; Veterinary Surgery</b>





Key to Local Economy and Amenities Map

Number	Name
1	Thrift Shop
2	Post Office
3	Supermarket
4	Petrol Station
5	Caravan Park
6	Information Centre
7	Public Toilets
8	Public Car Park
9	Public Car Park
10	Public Car Park
11	Moness Resort
12	Aberfeldy Town Square
13	Aberfeldy Business Park
14	Aberfeldy Small Business Centre
15	Health Centre
16	Fire Station
17	Recycling Centre
18	Veterinary Surgery

## **ABERFELDY, DULL & WEEM – VISION FOR OUR FUTURE**

This statement has been prepared using local residents' and organisations' answers to the question – ***“What is your ideal vision for the future of this community – the best you can imagine it in 10 years' time?”***

**A community for everyone – with homes for all ages and incomes, businesses and jobs that sustain us, services and support that make life better.**

**A thriving, busy place that welcomes visitors and provides a quality experience, but is not wholly dependent on tourism or over-run by it.**

**A sustainable, caring and healthy community – in control of its own future, making decisions and taking actions that benefit both people and nature.**

**Retaining the character that makes this place so special – building on our strong community spirit and important heritage.**

**Source:** Aberfeldy, Dull & Weem Community Action Plan 2025

## STATEMENT OF PROPOSALS

The Community Action Plan process identified the main priorities that the community wishes to progress over the next 5 years. This can be read in full at

<https://aberfeldydt.org/>

The tables & maps below provide a statement of proposals that relate to specific buildings or land sites.

### Housing & Development

Location	Proposal
Former Slaughterhouse site	Purchase by Aberfeldy Development Trust for development of affordable homes for sale & rent to provide homes for families and key workers
other housing sites	Housing Sites, affordable housing – support community led housing, where communities have more control over who will be allocated a house, via the use of a community allocation policy, rural housing burden, work with Perth and Kinross Council to develop a local lettings policy
Empty church building on Crieff Road	Consider if this could be used by community e.g. as housing, community project, training/business development
Site of existing Scout Hut	Look at relocation of Scout hut and use this brownfield site – explore feasibility of sheltered accommodation/housing for elderly to support ageing population
Remaining greenfield site at Dalweem	Explore feasibility of development of this site for sheltered accommodation/housing for elderly to support ageing population
Control of second homes and short term lets	Lobby for short term let control zone in Highland Perthshire

### Transport & Access to Services

Location	Proposal
Cycle route between Grandtully – Aberfeldy-Kenmore	Improve this route to encourage recreation and active travel
Site of existing Scout Hut	Explore potential to increase nursery and childcare provision to enable more parents to work
Public toilets at Victoria Park	Work with PKC to improve this facility to better serve visitors and residents
Banking Hub	Bring a full Banking Hub to Aberfeldy – potentially at Locus Centre.

**Roads Traffic & Parking**

Location	Proposal
Parking	Additional disability parking in Square Increased visitor parking to stop illegal parking in town
Safe paths and cycle ways	Alongside road from Dull – Camserney - Weem
Traffic calming measures	On Crieff Road, and through town to slow down traffic
Road crossings	At Co-op
Plastic Bridge at golf course	Explore safe and sustainable options for future of bridge
Wades Bridge	Commission Conservation plan and restore/conservate historic Wade's Bridge

**Access & Environment**

Location	Proposal
Core path network	Improve and update signposts
Calliachar Forest	Circular route from the Birks to Calliachar forest and the Dun
Riverside footbridges	Maintain the 4 footbridges
Flood measures	Promote and improve practices to reduce floodrisk, e.g. riverbank restoration, tree planting

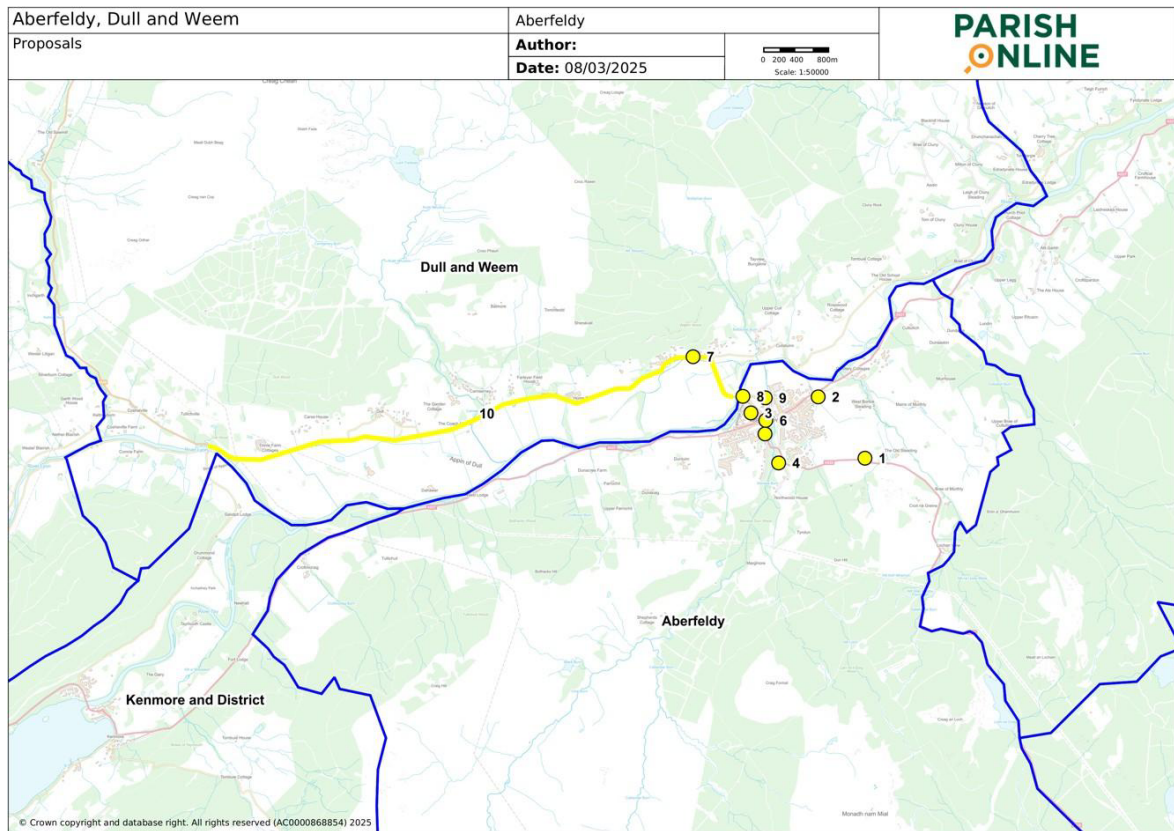
**Community, Recreation & Culture**

Location	Proposal
Aberfeldy Sports Club	Progress with project to develop a mixed use clubhouse/changing facility for community recreation
Aberfeldy Museum	Progress plans to establish a museum in Aberfeldy
Birks Cinema	Support future development of Cinema as the cultural hub of Aberfeldy
Play equipment Victoria Park	Repair/improve play equipment

**Local Economy & Tourism**

Location	Proposal
Town Centre	Tidy up/clean up town centre More use of town Square for events Use of empty shops etc for pop up businesses
Business growth & support (no specific location)	Support development of new businesses & business premises

## Map of Proposals



## Key to Proposals Map

Number	Name
1	New Cemetery
2	Community Led Affordable Housing
3	Move/Redevelop Old Scout Hut
4	Potential Site New Scout Hut
5	Old Church
6	Old Bank (Banking Hub)
7	Traffic Calming reduce Speed Limit
8	Aberfeldy Sports Club
9	Play Equipment Upgrade / Repair
10	Segregate Cycle / Footpath



## **ACKNOWLEDGEMENTS**

We would like to thank all the CAP Steering Group members and other volunteers who contributed their time and effort to this process and did an amazing job of involving so many voices from the community.

STAR Development Group provided specialist Community Action Plan training, guidance and support throughout. The James Hutton Institute provided input to help prepare the Local Place Plan.

We are grateful to Perth & Kinross Council Community-Led Local Development programme for funding the Community Action Plan and Local Place Plan.



## **APPENDIX 1 – Notification of Consultation Process:**

The Aberfeldy Development Trust in partnership with Aberfeldy Community Council and Dull & Weem Community Council are in the process of completing our Local Place Plan which will be registered with Perth and Kinross Council for consideration in the development of LDP2.

A key part of the process is gathering views from our Community and therefore our LPP will be open for consultation on [aberfeldydt.org](http://aberfeldydt.org) from Thursday 26th July to Wednesday 23rd July 2025.

All comments should be sent to [aberfeldydevelopmenttrust@gmail.com](mailto:aberfeldydevelopmenttrust@gmail.com)

The final version will be approved at our ADT Board meeting on Monday 28th July 2025.

The above text was made public using the following methods:

- Athol and Breadalbane Quair magazine (July 2025)
- Facebook Pages:
  - o Aberfeldy Development Trust
  - o Aberfeldy Community Notice Board
  - o Aberfeldy Community Connections
- Website: Aberfeldy Development Trust

## **APPENDIX 2 – PKC Ward Councillors were sent the following message:**

Information Notice: Aberfeldy, Dull & Weem proposed Local Place Plan for comment

Dear Councillors,

I am contacting you formally on behalf of the Aberfeldy Development Trust to seek your comments on our draft Local Place Plan which has been developed in partnership with Aberfeldy CC and Dull & Weem CC. The draft LPP is informed by our Community Action Plan. As part of the process of developing both our Community Action Plan and Local Place Plan for our Community Council area we have carried out extensive community engagement. We have now prepared a draft Local Place Plan. It will be published online for public consultation at <https://aberfeldydt.org> from Thursday 26<sup>th</sup> July to Wednesday 23<sup>rd</sup> July 2025.

Please do share the link around your local networks in the local area and encourage people to take a look and respond. We are legally required to send each local authority Councillor for our Community Council area the following information, to comply with Section 4 of the Town and Country Planning (Local Place Plans) (Scotland) Regulations 2021:

### **1. Proposed Local Place Plan**

Please see the attached plan, which can also be downloaded from <https://aberfeldydt.org>

### **2. Brief description of the content and purpose of the proposed Local Place Plan**

The Plan covers Aberfeldy, Dull and Weem. In order to inform LDP2, our Plan outlines visions and proposals that seek to enable developments in and for our community that amplify sustainability of our local economy, population, cultural and natural heritage while improving accessibility and resilience of our facilities, amenities and public spaces.

Comments can be made by emailing [aberfeldydevelopmenttrust@gmail.com](mailto:aberfeldydevelopmenttrust@gmail.com). The deadline for comments is **Wednesday 23rd July 2025**. Our intention is to approve our Local Place Plan at our ADT Board meeting on Monday 28th July.

If you require more time to respond or would like any further information or clarification, please let me know. The above information comprises the 'information notice' to which the Regulations refer. We are sending similar information notices to local elected members in our Community Council Area and our adjoining (active) Community Councils in Mid-Atholl, Strathday & Grandtully; Kenmore & District; Aberfeldy, Dull and Weem; Killiecrankie, Fincastle & Tummell; Rannoch; Glen Lyon & Loch Tay; Pitlochry & Moulin; and Dunkeld & Birnam, as required by the Regulations. Please let me know if you have any queries.

Kind regards

Gill Steel  
Chair

### **APPENDIX 3 – Adjacent Community Councils were sent the following message:**

Information Notice: Aberfeldy, Dull & Weem proposed Local Place Plan for comment

Dear Community Councils,

I am contacting you formally on behalf of the Aberfeldy Development Trust to seek your comments on our draft Local Place Plan which has been developed in partnership with Aberfeldy CC and Dull & Weem CC.

The draft LPP is informed by our Community Action Plan. As part of the process of developing both our Community Action Plan and Local Place Plan for our Community Council area we have carried out extensive community engagement. We have now prepared a draft Local Place Plan. It will be published online for public consultation at <https://aberfeldydt.org> from Thursday 26<sup>th</sup> July to Wednesday 23<sup>rd</sup> July 2025.

Please do share the link around your local networks in the local area and encourage people to take a look and respond. We are legally required to send each adjacent Community Council the following information, to comply with Section 4 of the Town and Country Planning (Local Place Plans) (Scotland) Regulations 2021:

#### **1. Proposed Local Place Plan**

Please see the attached plan, which can also be downloaded from <https://aberfeldydt.org>

#### **2. Brief description of the content and purpose of the proposed Local Place Plan**

The Plan covers Aberfeldy, Dull and Weem. In order to inform LDP2, our Plan outlines visions and proposals that seek to enable developments in and for our community that amplify sustainability of our local economy, population, cultural and natural heritage while improving accessibility and resilience of our facilities, amenities and public spaces.

Comments can be made by emailing [aberfeldydevelopmenttrust@gmail.com](mailto:aberfeldydevelopmenttrust@gmail.com). The deadline for comments is **Wednesday 23rd July 2025**. Our intention is to approve our Local Place Plan at our ADT Board meeting on Monday 28th July.

If you require more time to respond or would like any further information or clarification, please let me know. The above information comprises the 'information notice' to which the Regulations refer. We are sending similar information notices to local elected members in our Community Council Area and our adjoining Community Councils as required by the Regulations. Please let me know if you have any queries.

Kind regards

Gill Steel  
Chair